

THE RESPONSIBILITIES

The tenant

He has to maintain the devices with the help of registered technician :



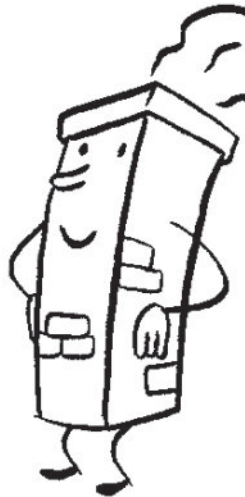
- ▶ Once a year for the **oil**, **wood** and **coal** appliances.
- ▶ Every two years for the **natural gas**.

You have to ask the technician for a **certificate** as a **proof of the maintenance**.

The landlord

He has to :

- 1) To provide a housing **in good state**,
- 2) To replace at his expenses the **old and dangerous devices**,
- 3) To plan the **used air evacuation** (= burnt gas) with chimneys in good state.



Available leaflets

Steps to take

- 1 - Looking for a housing
- 2 - Visit and moving in
- 3 - Lease and rent
- 4 - The fire insurance
- 5 - Housing's rules

Risks

- 6 - Housing and health
- 7 - Chimney sweep
- 8 - The humidity
- 9 - Maintenance and repairs
- 10 - The danger of CO

To live better

- 11 - Water and energy saving

This leaflet is available in following languages :

Albanian	Farsi
English	French
Arabic	Russian
Spanish	Turkish

Text treatment is proceeded by CIRE and Convivence/Samenleven

First published : Octobre 2006

Editing : Alix Francart

Translation by CIRÉ Service interpretership

Drawings : Thomas De Coster

Responsible editor : Frédérique Mawet

Coordination et Initiatives pour et avec les Réfugiés et Étrangers

Rue du Vivier, 80-82 B - 1050 Bruxelles

+322/629.77.10

<http://www.cire.be/>

cire@cire.irisnet.be

Avec l'appui de la Région de Bruxelles-Capitale

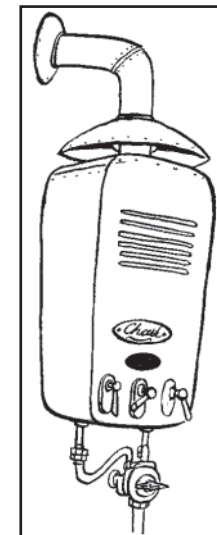
Risks

LEAFLET N°10

THE DANGER OF CO

English

RENT HOUSING



A tip!
Take the same leaflet in French to learn the vocabulary.

C.I.R.É.



INTOXICATION FROM CO



The danger comes from the **defective heater or water-heater installations.**



You don't smell and see anything. The CO is mortal.

Every year there are hospitalisation or death cases in Brussels due to the CO.

Where does the CO come from ?

The CO (carbon monoxide) is a **gas** coming from the **wrong combustion** of the wood, coal and oil produced by the defected or bad maintained heating appliances or water-heaters.

The **electric devices** do not produce CO.

The CO causes to people :

- ▶ Nauseas,
- ▶ Headaches,
- ▶ A very strong tiredness,
- ▶ Head spins,
- ▶ Heart problems,
- ▶ Faintings,
- ▶ And even death.



HOW TO NOTICE A PROBLEM?

The CO is **invisible** and **odourless** but you can still notice it by :

- ▶ The water-heater **flame** becomes **yellow** (= there's not enough of fresh air in the room),
- ▶ The **steam** on windows or walls (= the used air can not go out),
- ▶ The **headache** and/or **head spin** (= the feeling of being sick).



HOW TO AVOID THE INTOXICATION ?

You have to be careful **every day** :

- ▶ If there is no **air opening** on the bottom of bathroom door, leave it half-opened.
- ▶ Use the devices without a chimney **only in large rooms.**
- ▶ **Ventilate** the rooms that are being heated by these appliances.
- ▶ A **professional plumber** needs to check, maintain and fix all the heating devices and the water-heaters.

The good use of devices

Different water-heaters have their own function :

5 litres ➡ Only for a **sink**, a washbasin.

10 litres ➡ Only for the **shower.**

13/16 litres ➡ Only for the **bath.**

IF YOU SMELL A GAS ODOUR...

Shut down all of your devices and make sure that the gas counter is not turning. If it is, there is a **leak.**

Call immediately
Sibelga/Electrabel
02/274.40.44



IN URGENT CASE



- 1) Enter the room and hold your breath,
- 2) Turn off the water-heater,
- 3) Open straight away **doors** and **windows**,

4) Take the unconscious person out of the room,

5) Put him or her on the side in a large ventilated room,

6) Call **112**,

7) Give your name and address,

8) Explain that you have found a **person intoxicated by CO** (= carbon monoxide)