

THE FUNGUS

Mould can appear in humid places.



The **fungus** develop there.



Some **fungus** are dangerous for health. You have to see the doctor.

The **technical service** can analyse the fungus and afterwards you will have to inform the landlord **by a registered mail**.

Contacts

► Cellule Régionale d'Intervention en Pollution Intérieure (CRIPI)

Gulledelle, 100 - 1200 Bruxelles
02/775.77.69
The report is free of charge.

► Le Syndicat des Locataires

Square Albert 1er, 32
1070 Bruxelles
02/524.42.03

Also look in

- The leaflet n°7 about the chimney sweep,
- The leaflet n°8 about the humidity,
- The leaflet n°10 about the CO danger.

Available leaflets

Steps to take

- 1 - Looking for a housing
- 2 - Visit and moving in
- 3 - Lease and rent
- 4 - The fire insurance
- 5 - Housing's rules

Risks

- 6 - Housing and health
- 7 - Chimney sweep
- 8 - The humidity
- 9 - Maintenance and repairs
- 10 - The danger of CO

To live better

- 11 - Water and energy saving

This leaflet is available in following languages :

| | |
|----------|---------|
| Albanian | Farsi |
| English | French |
| Arabic | Russian |
| Spanish | Turkish |

Text treatment is proceeded by CIRE and Convivence/Samenleven

First published : Octobre 2006

Editing : Alix Francart

Translation by CIRÉ Service interpretership

Drawings : Thomas De Coster

Responsible editor : Frédérique Mawet

Coordination et Initiatives pour et avec les Réfugiés et Étrangers

Rue du Vivier, 80-82 B - 1050 Bruxelles

+322/629.77.10

<http://www.cire.be/>

cire@cire.irisnet.be

Avec l'appui de la Région de Bruxelles-Capitale

Risks

LEAFLET N°6

HOUSING AND HEALTH

English

RENT HOUSING



A tip!
Take the same leaflet in French to learn the vocabulary



THE LEAD

This metal is **toxic** and is found in some **paintings** or leaded **water pipes**.



When the painting peels off, **children** can pick it off and eat it (it has a sweet taste).

- ▶ The pieces of peeled painting are dangerous and cause the **lead poisoning (saturnism)**.
- ▶ You have to take your child to the doctor.
- ▶ You also have to inform the landlord **by a registered mail**.

The lead poisoning (saturnism)

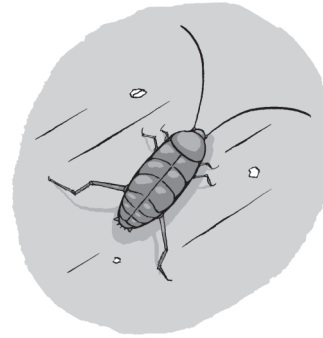
It's an **illness** that has the following signs :

- ▶ The child has a stomach ache and doesn't eat well,
- ▶ His sleep is disturbed,
- ▶ Concentration loss at school,
- ▶ He doesn't grow well, he is pale.



THE COCKROACHES

The cockroaches develop in **warm humid places**, where the **food** is present. They do not survive in the freezing.



They can be the cause of **infection transmission**.

Thus it's necessary to keep them out of the house, the water and the food.

To avoid the cockroaches

- ▶ Do not leave your **food** : put it away **and/or** throw it away,
- ▶ Clean right away the **greasy stains**,
- ▶ Close properly the **taps** to keep the cockroaches from going through,
- ▶ If the **whole building** needs to be disinfected, inform the landlord or the social housing society,
- ▶ Don't crush the cockroaches, **throw them into the toilet** and flush the water.

Some **packages** come from contaminated places : storage rooms of second hand furniture or clothes, exotic food shops.



You risk bringing back in your bags, suitcases, shoes the **larvas** from an infected place.



If you notice the cockroaches presence in your housing :

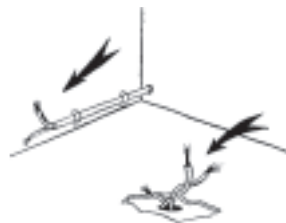
- ▶ It is necessary to inform the landlord **by a registered mail**,
- ▶ You can inform the **hygiene service of the commune**,
- ▶ This service will direct you to a **private disinfection society**.

It would cost you about **250 €** to get rid of cockroaches in a one-family house.

THE ELECTROCUTION AND FIRE RISKS



Defective electric installation represents a **DANGER**



- ▶ If the electric wires are hanging,
- ▶ If the **fuses board** is out of line,
- ▶ If wires are **naked** or **old**,



In this case you have to write to the landlord **by a registered mail** and ask to **repair it**.